

Mitsubishi Electric launches its high performance HMI/SCADA software, MAPS, in Scandinavia

Ratingen, Germany 7th of January 2014

Mitsubishi Electric has launched MAPS (Mitsubishi Adroit Process Suite) in the strategically important regions of Scandinavia and the Baltic States. Mitsubishi explains that MAPS offers much more than a simple SCADA system. It is a complete life-cycle management tool. One of its main benefits is almost infinite scalability: MAPS can be used for complex process-oriented solutions, as a normal SCADA/HMI or even for an OEM wanting a panel-based HMI solution.

MAPS has recently been introduced to Mitsubishi systems integrators and customers throughout Scandinavia by a series of roadshows, where it was extremely well-received. Bjorn Sandberg, Scandinavian technical support engineer for Mitsubishi Electric Europe's Factory Automation Group, says: "Delegates appreciated that its' easy to use, intuitive design interface makes building solutions very easy."

As a life-cycle software tool, it performs along the entire value chain and, unlike PLC/ SCADA integration tools, is usable in both the engineering and integration phases. Its scalability means system extensions are easily accommodated, while maintenance is straightforward, thanks to its flexibility.

One of the keys to MAPS' popularity is its PLC/SCADA wizard function, which significantly reduces the time spent on development and configuration. It also ensures a standardised and structured design, which eases ongoing maintenance of the plant throughout its life cycle.

With MAPS, reports covering areas such as I/O schedules, PLC and SCADA tag configuration can be automatically generated. This ensures drawings and reports are always up to date. The reports are database-driven, so even through ongoing maintenance the reports will always reflect the current status of the electrical and instrumentation configuration.

Bjorn Sandberg summarises the benefits of MAPS as:

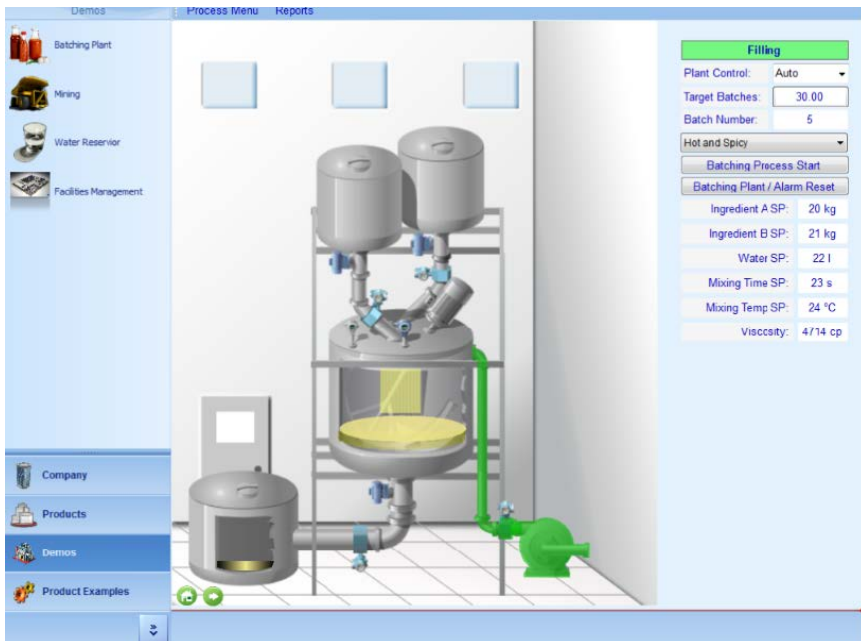
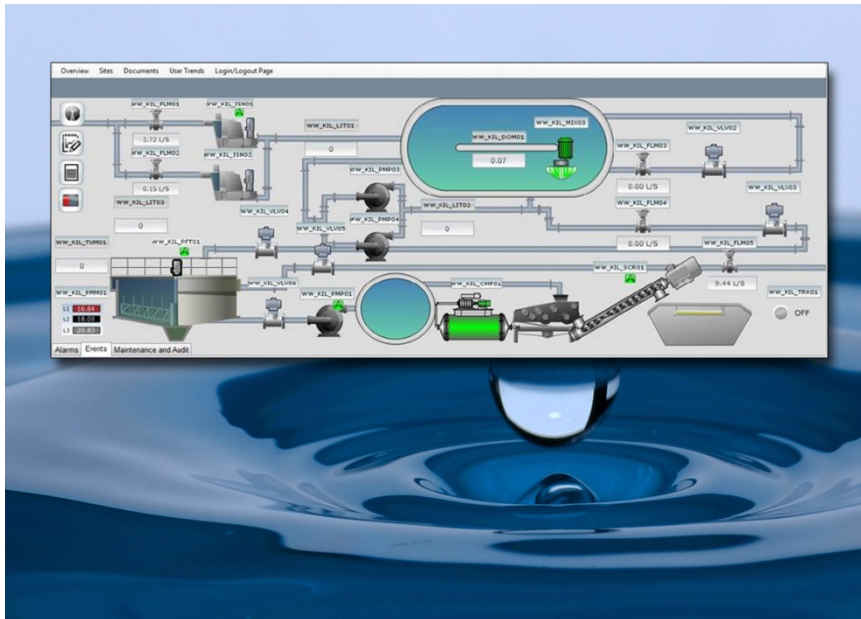
- Single point of configuration, deployment and management
- Automatically generated PLC and SCADA projects to reduce engineering effort
- Automatically generated reports
- Ongoing life-cycle management

He says: “MAPS can fit any size solution as systems are built up from the I/O requirement and number of HMIs needed. Users can start small and can easily scale up later on.”

Overall, MAPS provides the customer with an innovative and integrated life-cycle management tool, which dramatically reduces the engineering time and cost throughout the lifetime of a plant. The software offers full flexibility from engineering to system integration for almost every customer demand. This makes it ideal for applications in a huge range of industries, and especially well suited to water and waste water, mining, food and beverage and life science.

Photo Captions:

Pictures 1 & 2: The life-cycle management tool MAPS can be used for complex process-oriented solutions, as a normal SCADA/HMI or even for an OEM wanting a panel-based HMI solution.



About Mitsubishi Electric:

With over 90 years of experience in providing reliable, high-quality products to both corporate clients and general consumers all over the world, Mitsubishi Electric Corporation is a recognized world leader in the manufacture, marketing and sales of electrical and electronic equipment used in information processing and communications, space development and satellite communications, consumer electronics, industrial technology, as well as in products for the energy sector, water and waste water, transportation and building equipment.

With around 121.000 employees the company recorded consolidated group sales of 29,5 billion Euro* in the fiscal year ended March 31, 2013. Our sales offices, research & development centres and manufacturing plants are located in over 30 countries.

Mitsubishi Electric Europe B.V., Factory Automation European Business Group (FA-EBG) has its European headquarters in Ratingen near Dusseldorf, Germany. It is a part of Mitsubishi Electric Europe B.V., a wholly owned subsidiary of Mitsubishi Electric Corporation, Japan.

The role of FA-EBG is to manage sales, service and support across its network of local branches and distributors throughout the EMEA region.

**Exchange rate 120,69 Yen = 1 Euro, Stand 31.3.2013 (Source: Deutsche Bundesbank)*

Further Information:

eu3a.mitsubishielectric.com/fa

www.mitsubishielectric.com

Press contact:

Mitsubishi Electric Europe B.V.

Factory Automation European Business
Group

Monika Torkel

Marketing Communications Coordinator
Gothaer Str. 8

40880 Ratingen, Germany

Tel.: +49 (0)2102 486-2150

Fax: +49 (0)2102 486-7170

Monika.Torkel@meg.mee.com

PR agency:

DMA Europa Ltd.

Mr. Roland Renshaw

Europa Building, Arthur Drive, Hoo Farm
Industrial Estate, Kidderminster,
Worcestershire, DY11 7RA, UK.

Tel.: +44 (0)1562 751436

Fax: +44 (0)1562 748315

roland@dmaeuropa.com

www.dmaeuropa.com