

New benchmark SCADA software platform

Dublin, Ireland, 28th of January 2019

MAPS 4, the latest SCADA solution from Mitsubishi Electric for control and visualisation, extends connectivity options, adds user tools and increases the scope of its built-in functionality. The result is a software suite that can reduce the time taken for project development and integration, while also enabling users to realise Smart Factory objectives.

Built on a strong Service Oriented Architecture (SOA), the full MAPS 4 process suite delivers flexibility in handling, automating, controlling, verifying and auditing processes. It provides a full life-cycle planning, management and integration platform for applications from manufacturing to infrastructure. There is also a dedicated HMI version available for machine builders and customers that require a more light-weight SCADA solution for localised control and visualisation tasks.

The SCADA software suite has useful everyday features such as an MS Excel bulk-configuration tool. This tool for example enables Excel users to create a large part of a SCADA project, for instance Tag databases, logging, and alarm definitions, in an intuitive and easy to use environment. The user also benefits from the many copy/paste and mass-configuration functionalities in Excel.

There are also extensive libraries for Mitsubishi Electric factory automation hardware and more than 100 other PLC and RTU drivers

onboard to make routine configuration quicker and more efficient. Use of pre-configured Object Template models as well as easy creation of new, individual models also support a fast, optimised integration process. Project changes can be deployed centrally providing a single point of engineering that reduces costs and increases usability.

Secure data sharing and cross platform connectivity are both high priorities for many process management applications. Therefore the SCADA solution can be hosted locally, in the cloud or privately. It can also be connected seamlessly to other third-party cloud hosted environments. Developed around popular industry standards such as OPC DA and UA, MQTT and BACNet, the entire software suite is effectively Industry 4.0 and IIoT ready. It combines the compatibility advantages of built-in OPC UA and DA support, with the openness of an HTML5 web client. Secure web connections provide easy browser-based monitoring and operation for PCs and mobile devices.

The scope and scalability of the product mean that project engineering and development costs for both large and small applications can be significantly reduced. The amount of physical programming required is kept low, even when the complexity of the application increases. This has benefits for the end user and the system integrators as both can become more competitive as a result. The investment is also better secured because the solution remains very flexible for updates and new projects.

For more information visit: www.mapsscada.com

Note:

See how Mitsubishi Electric can respond to today's automation demands:

ie3a.mitsubishielectric.com/fa/en/solutions

Image Captions :

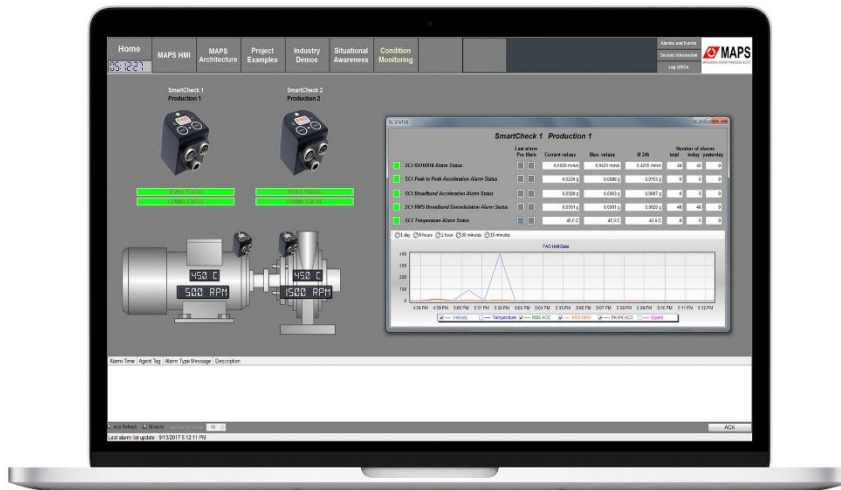


Image 1: Use of pre-configured Object Template models as well as easy creation of new, individual models support a fast, optimised integration process.

[Source: Mitsubishi Electric Europe B.V.]

The image(s) distributed with this press release are for editorial use only and are subject to copyright. The image(s) may only be used to accompany the press release mentioned here, no other use is permitted.

About Mitsubishi Electric Corporation

With nearly 100 years of experience in providing reliable, high-quality products, Mitsubishi Electric Corporation (TOKYO: 6503) is a recognized world leader in the manufacture, marketing and sales of electrical and electronic equipment used in information processing and communications, space development and satellite communications, consumer electronics, industrial technology, energy, transportation and building equipment. Embracing the spirit of its corporate statement, Changes for the Better, and its environmental statement, Eco Changes, Mitsubishi Electric endeavors to be a global, leading green company, enriching society with technology. The company recorded consolidated group sales of 4,444.4 billion yen (in accordance with IFRS; US\$ 41.9 billion*) in the fiscal year ended March 31, 2018.

For more information visit: www.MitsubishiElectric.com

With around 142,340 employees, our sales offices, research & development centres and manufacturing plants are located in over 30 countries.

Mitsubishi Electric Europe B.V. Factory/Industrial Automation- Ireland is located in Dublin, Ireland. It is a part of the European Factory Automation Business Group based in Ratingen, Germany which in turn is part of Mitsubishi Electric Europe B.V., a wholly owned subsidiary of Mitsubishi Electric Corporation, Japan.

The role of Industrial Automation – Irish Branch is to manage sales, service and support across its network of local distributors throughout Ireland

*At an exchange rate of 106 yen to the US dollar, the rate given by the Tokyo Foreign Exchange Market on March 31, 2018

Further Information:

ie3a.mitsubishielectric.com/fa <http://mitsubishielectric.ie/>

Follow us on:



youtube.com/user/MitsubishiFAEU



<https://twitter.caom/MEIrishBranch>



<https://www.facebook.com/pages/Mitsubishi-Electric-Ireland-Factory-Automation/431651286897460>



<http://www.linkedin.com/company/mitsubishi-electric-ireland>

Press contact:

Mitsubishi Electric Europe B.V. -

Irish Branch

Rachel O' Brien

Westgate Business Park,
Ballymount Road, Dublin 2.4

Tel.: +353 1 419 8856

Fax: +353 14198890

rachel.obrien@meir.mee.com

ie3a.mitsubishielectric.com



PR agency:

DMA Europa Ltd.

Mr. Roland Renshaw

Europa Building, Arthur Drive, Hoo Farm Industrial
Estate, Kidderminster, Worcestershire, UK

Tel.: +44 (0)1562 751436

Fax: +44 (0)1562 748315

roland@dmaeuropa.com

www.dmaeuropa.com